

NEWS RELEASE

Contact:

Diane Maxwell

408.283.8155

diane@sjica.org

New Exhibitions Explore Intersections of Japanese and Western History and Culture
Opening February and March: Wendy Maruyama: Executive Order 9066: The Tag Project and Toriawase



Figure 1

SAN JOSE, CA – January 2014 – The San Jose Institute of Contemporary Art (ICA), in collaboration with ArtObjectGallery and the Japanese American Museum of San Jose (JAMsj), proudly presents *Wendy Maruyama: Executive Order 9066: The Tag Project*. This multi-venue exhibition opens in March 2014 and

explores the complex story of the Japanese-American internment. This is the fifth presentation of this exhibition which premiered in May 2012 at San Diego State University. The Society of Arts and Crafts in Boston presented the exhibition in the fall of 2012 and has organized the show's traveling schedule to Arizona and Northern California. Also opening at the ICA in February 2014, *Toriawase*, a group exhibition that juxtaposes traditional and historical Japanese art and objects with selected contemporary Western artwork. An opening reception for these exhibitions will be held on Friday, March 14, 2014 from 6-9pm.

Wendy Maruyama: Executive Order 9066: The Tag Project
March 1 – May 24, 2014

Main Gallery

In 1942, President Franklin Delano Roosevelt signed Executive Order 9066 authorizing the internment of tens of thousands of American citizens and resident aliens of Japanese ancestry. Wendy Maruyama, a third generation Japanese-American and highly regarded educator and artist/furniture maker based in San Diego, has created a compelling body of work examining this period in American history. The exhibition includes three integrated parts: *Executive Order 9066*, *The Tag Project*, and an exhibition of historical artifacts.

The Tag Project: Presented at the ICA. Each interned citizen wore a paper identification tag, which inspired Maruyama to embark on the project. Enlisting help from hundreds of volunteers across the country, Maruyama recreated each tag – 120,000 – to represent every person who was sent to one of 10 internment camps. This large-scale installation consists of 10 groupings of 120,000 recreated paper identification tags suspended from the ceiling that evoke a powerful sense of the humiliation endured by the internees.

Wendy Maruyama: Executive Order: 9066: Presented at ArtObjectGallery. This exhibition features a series of wall-mounted cabinets and sculptures created by Wendy Maruyama that enshrine elements of life in the internment camps. The pieces integrate photo transfers based on the documentary photographs of Dorothea Lange and Toyo Miyatake in conjunction with materials such as barbed wire, tar paper and domestic objects.



Figure 2

Executive Order 9066: Memories and Artifacts: Presented at JAMsj. This exhibition highlights artifacts from the Museum's permanent collection that reveal the historical events surrounding the forced incarceration of tens of thousands of Japanese Americans during World War II.

"Executive Order 9066 not only reminds us of a dark time in our nation's history but also provides context for the current conversation regarding immigration reform, racial profiling and privacy laws," says Cathy Kimball, ICA Executive Director. "We're honored to partner with JAMsj to lend historical perspective to their contemporary presentation as well as ArtObjectGallery to showcase sculptures that incorporate artifacts from the camps."

Opening Reception events will be held on Friday, March 14, at each of the following exhibition venues:

Wendy Maruyama: Executive Order 9066: The Tag Project: 6pm-8pm, San Jose ICA: 560 South 1st Street, downtown San Jose

Wendy Maruyama: Executive Order 9066: 7pm-9pm, ArtObjectGallery: 592 North 5th Street, Japantown San Jose

Executive Order 9066: Memories and Artifacts: 6pm-9pm, Japanese American Museum of San Jose, 535 North 5th Street, Japantown San Jose

A free shuttle bus will transport guests between opening reception events. An accompanying catalog with an essay by Dr. Lowery Stokes Sims, Curator at the Museum of Arts and Design in New York City, will be available for purchase at presenting venues.

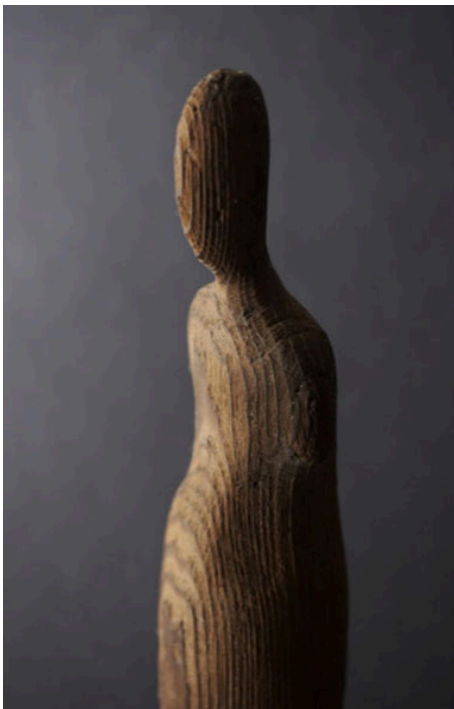


Figure 3

Toriawase

February 22 – May 17, 2014

Focus Gallery

Toriawase loosely means to select and combine elements of beauty and to enjoy the harmony that results from their coming together. This concept, which is central to the Japanese tea ceremony, informs the approach to this group exhibition. This presentation will juxtapose traditional and historical Japanese art and objects including ancient scrolls, lacquer works and Japanese tea ceremony utensils with selected Western artwork from contemporary artists including Jaap Bongers, Tim Craighead, Jay DeFeo, Marc D'Estout, Bean Finneran, Joel Shapiro, among others. Western artists whose works are on view in *Toriawase* have not been directly influenced or inspired by a Japanese aesthetic. Rather, they share a similar aesthetic across time and across continents. This exhibition is co-curated by the ICA and Misako Mitsui, an internationally recognized curator and educator of Japanese art.

Also showing at the ICA through May 31, 2014.

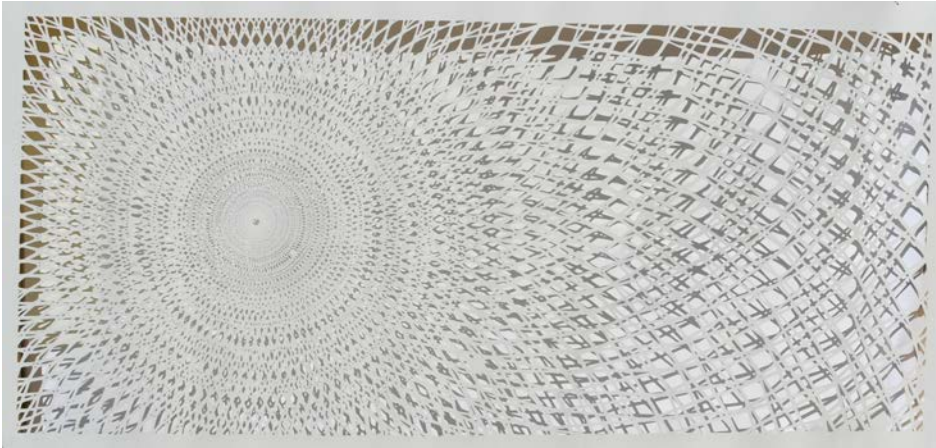


Figure 4

Tahiti Pehrson: Variations and Betwixt

March 14 – May 31, 2014

Front Windows

Northern California artist, Tahiti Pehrson has been working with paper for the last 15 years. His intricate, X-Acto knife cut-paper works transform spaces with their immersive geometrical patterns layered into three-dimensional structures. Opening Reception: Friday, March 14, 6pm - 8pm

Plate. Proof. Print.

March 25 - 29, 2014

Corridor Gallery

In connection with the 42nd annual Southern Graphic's International Printmaking Conference, this exhibition features plates, proofs, and prints created by a selection of ICA Artists-in-Residence.

Coming, Summer 2014

Amy Ellingson: Iterations and Assertions

June 7 – September 13, 2014

Main Gallery

New works by San Francisco-based Ellingson. This exhibition will consist of a series of works exploring interrelated elements in various media, including large-scale paintings, sculptures and a site-specific mural installation. Ellingson is a nationally recognized artist whose work explores the dichotomy between digital rendering processes and traditional painting methodologies.

Poetic Codings

May 31 – September 6, 2014

Focus Gallery and Cardinale Project Room

A group exhibition that explores the relationship between art and technology through the use of flat screen displays, wall projections, interactive installations, and tablet computer apps. A partial list of featured artists include: John Baldessari, John Carpenter, Jason Lewis, Lia, Erik Loyer, Casey Reas, Jeremy Rotsztain, Rafael Rozendaal, Scott Snibbe, and Jody Zellen.

Images:

Figure 1: Wendy Maruyama: *Executive Order 9066: The Tag Project*, partial installation view (San Diego State University), 2012, Paper, string and ink, each approximately 11' x 2' in diameter, Photo: Kevin J. Miyazaki

Figure 2: Wendy Maruyama, *Watchtower*, 2008, Pine, sitka spruce, fir, ink and painted wood bowls, 32 x 18 x 8 inches, Courtesy of Jane and Stephen Lorch, Photography: Kevin J. Miyazaki

Figure 3: Anonymous, *Buddha*, c. 14th century, Wood, 12 x 1 1/4 x 1 1/2 inches, Courtesy Mitsui Fine Arts

Figure 4: Tahiti Pehrson, *Connectivity*, 2013, Hand-cut paper, 5 x 11 feet, Courtesy of the Artist and K. Imperial Fine Art, San Francisco

Wendy Maruyama: Executive Order 9066: The Tag Project is organized by The Society of Arts and Crafts, Boston, Massachusetts, and funded in part by the Windgate Charitable Foundation. The *Tag Project* is generously supported in part by Applied Materials, the Farrington Historical Foundation, and the ICA Director's Circle.

Toriawase is generously supported in part by Applied Materials and the ICA Director's Circle.

The ICA gratefully acknowledges support from the Office of Cultural Affairs for the City of San Jose, the David and Lucile Packard Foundation and Silicon Valley Creates. ICA exhibitions and programs are also supported in part by Applied Materials Foundation, Adobe Foundation, and members of the ICA.

The San Jose Institute of Contemporary Art (ICA) is an energetic art space located in downtown San Jose dedicated to making contemporary art accessible and exciting to audiences of all ages and backgrounds. Exhibitions are presented in three galleries that display the most current, relevant and often challenging art from the region, the nation and the world. The ICA is activated by opening receptions, monthly gallery walks, programming in the front windows, panel discussions, printmaking workshops, brown bag lunches and impromptu conversations in the galleries.

The Japanese American Museum of San Jose (JAMsj) is an all-volunteer 501(C)(3) organization whose mission is to collect, preserve and share Japanese American history, culture, and art with a focus on the Greater Bay Area. Located in one of three remaining Japantowns in the U.S., JAMsj documents the early history of San Jose's Japantown, and the WWII incarceration, including the contributions of the 442nd Regimental Combat Team/Military Intelligence Service. The museum also has an authentic replica of a WWII barracks furnished with artifacts from the camps. JAMsj owns the largest collection of pre-war farm equipment used by Japanese and Japanese Americans who were major contributors to Santa Clara Valley's agricultural industry. JAMsj hosts regular public programs and provides speakers, as well as guided tours of San Jose's historic Japantown.

ArtObjectGallery was founded in 2002 by artist Ken Matsumoto and is located in the heart of historic Japantown in San Jose, CA and exhibits art from some of the Bay Area's finest painters, sculptors, and printmakers. As one of only a few private galleries in the Silicon Valley, ArtObjectGallery plays an important role in the arts community by providing an exhibition space for local artists, and it has earned a reputation as a premier gathering space for collectors and the culture-consuming public.

###